

# COVEY ISLAND BOATWORKS

CUSTOM YACHTS FOR THE WORLD SINCE 1979

PO Box 1539  
Lunenburg, NS B0J2C0

70 Port Mersey  
Brookly, NS B0J1H0

902-640-3064 - [sales@coveyisland.com](mailto:sales@coveyisland.com)

## 2000 Covey Island 38 Schooner



**Impeccably built for a very discerning owner, to very high standards. Stored in heated boathouse since new, very well maintained and serviced, looks like new. If you are a schooner fan and looking for a pristine example of a Covey Island boat, this is it!**

**Only 283 hours on her twin Vetus diesel engines! These engines produce 84 total hp.**

### SPECIFICATIONS

<b>Year Built</b>	2000	<b>Category</b>	Sail	<b>Length Overall</b>	38ft
<b>Beam</b>	12'3 ft	<b>Max Draft</b>	5'6 ft	<b>Double Berths</b>	2
<b>Construction</b>	Cold-Molded Composite	<b>Keel</b>	Full Keel	<b>Waterline Length</b>	31'9"
<b>Engines</b>	2	<b>Total Engine Power</b>	84 hp		

*Additional details are listed below. Particulars listed are believed to be correct, but not guaranteed. It is the prospective buyer's responsibility to verify, through inspection and survey, the accuracy of this document.*



## ENGINE 1 SPECIFICATIONS

<b>Make</b>	Vertus	<b>Model</b>	P4.17	<b>Drive Type</b>	Stern
<b>Fuel</b>	Diesel	<b>Engine Power</b>	42 hp	<b>Type</b>	Inboard
<b>Year</b>	2000	<b>Engine Hours</b>	287	<b>Engine Location</b>	Center Starboard

## ENGINE 2 SPECIFICATIONS

<b>Make</b>	Vertus	<b>Model</b>	P4.17	<b>Drive Type</b>	Stern
<b>Fuel</b>	Diesel	<b>Engine Power</b>	42 hp	<b>Type</b>	Inboard
<b>Year</b>	2000	<b>Engine Hours</b>	287	<b>Engine Location</b>	Center Port

## Construction

Covey Island Boatworks uses a time-tested Cold-Molded wood epoxy composite construction process providing exceptionally strong and light yachts.

Bow sprit with dual anchors

Double lifelines with gates

Handrails

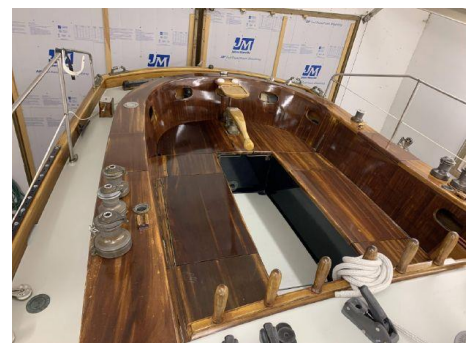
Outdoor cooler in cockpit

Storage in cockpit

Tiller steering

Portholes

Twin Vetus P4.17 diesel inboard engines





## Accommodations

This boat can sleep 6

V-berth forward with grey cushions

Storage locker to port

Head to starboard with vanity, manual head and sink

Huge double berth to starboard

Single berth to port

Folding table center



## Electronics

VHF

Chart plotter

Radar

Depth sounder - Raymarine

Speed – Raymarine

Clarion CD player with speakers

Compass





## Sails Rigging

**Schooner Rig with laminated Spars**

**Sail inventory will be provided**

**Winches**

5 – Lewmar #16

2 – Lewmar #30

2 – Lewmar – 8



## Additional

Anchor with chain and rode

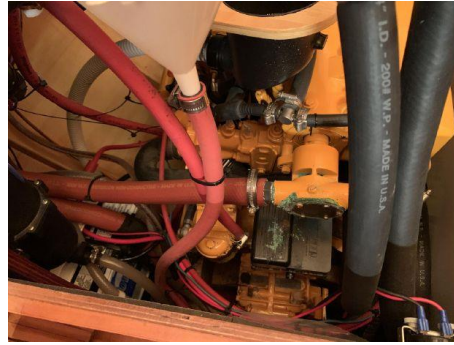
Anchor #2 with chain and rode

Windlass





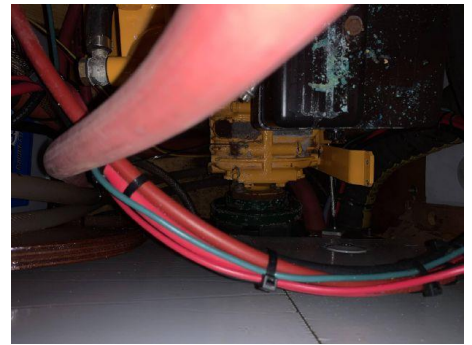
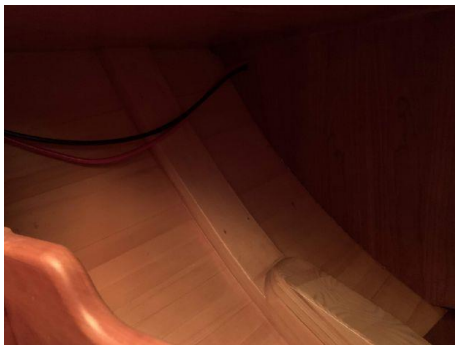
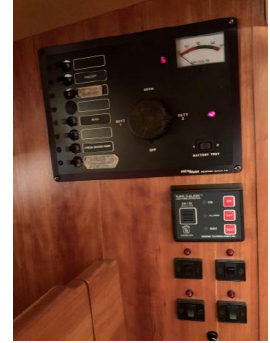
**COVEY ISLAND BOATWORKS**  
CUSTOM YACHTS FOR THE WORLD SINCE 1979



coveyisland.com • 902-640-3064



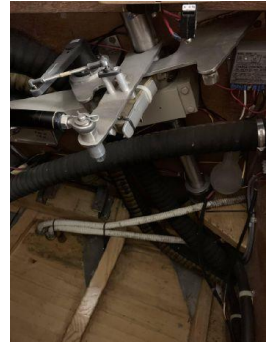
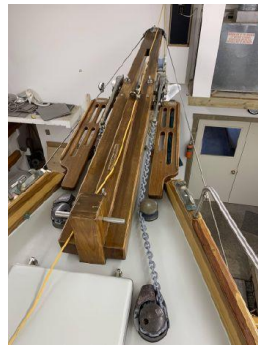
**COVEY ISLAND BOATWORKS**  
CUSTOM YACHTS FOR THE WORLD SINCE 1979



coveyisland.com • 902-640-3064



**COVEY ISLAND BOATWORKS**  
CUSTOM YACHTS FOR THE WORLD SINCE 1979



coveyisland.com • 902-640-3064



**COVEY ISLAND BOATWORKS**  
CUSTOM YACHTS FOR THE WORLD SINCE 1979

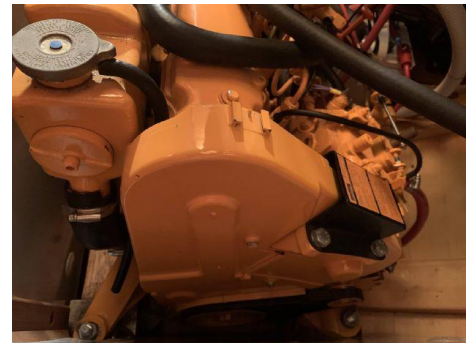


coveyisland.com • 902-640-3064



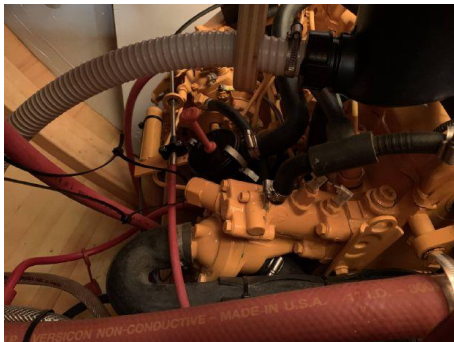


**COVEY ISLAND BOATWORKS**  
CUSTOM YACHTS FOR THE WORLD SINCE 1979





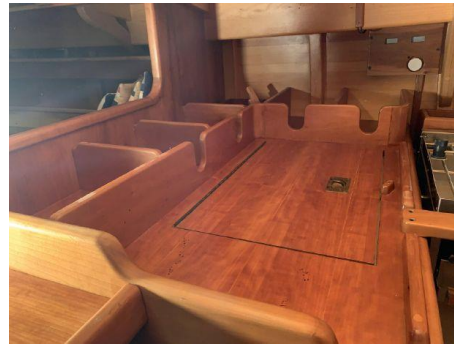
**COVEY ISLAND BOATWORKS**  
CUSTOM YACHTS FOR THE WORLD SINCE 1979



coveyisland.com • 902-640-3064



**COVEY ISLAND BOATWORKS**  
CUSTOM YACHTS FOR THE WORLD SINCE 1979



coveyisland.com • 902-640-3064



**COVEY ISLAND BOATWORKS**  
CUSTOM YACHTS FOR THE WORLD SINCE 1979



*Additional details are listed above. Particulars listed are believed to be correct, but not guaranteed. It is the prospective buyer's responsibility to verify, through inspection and survey, the accuracy of this document.*

To schedule a viewing please contact  
[sales@coveyisland.com](mailto:sales@coveyisland.com) or call 902-640-3064.

coveyisland.com • 902-640-3064